

**TEST PIT "R"**  
(CONDUCTED ON NOVEMBER 15, 2001)

- 0-5" TOPSOIL (10YR 3/3) DARK BROWN, TOPSOIL, FINE LOAMY SAND, GRANULAR, FRIABLE.
  - 5"-36" (10YR 4/6) DARK YELLOWISH BROWN FINE SANDY LOAM GRANULAR, FRIABLE.
  - 36"-72" (10YR 5/4) YELLOWISH BROWN FINE SAND, GRANULAR, FRIABLE.
- E.S.H.W.T.: 48"  
NO WATER OBSERVED  
REFUSAL: 72"  
RESTRICTIVE LAYERS: NONE ENCOUNTERED  
PERC. RATE: 8 MIN./INCH @ 40"

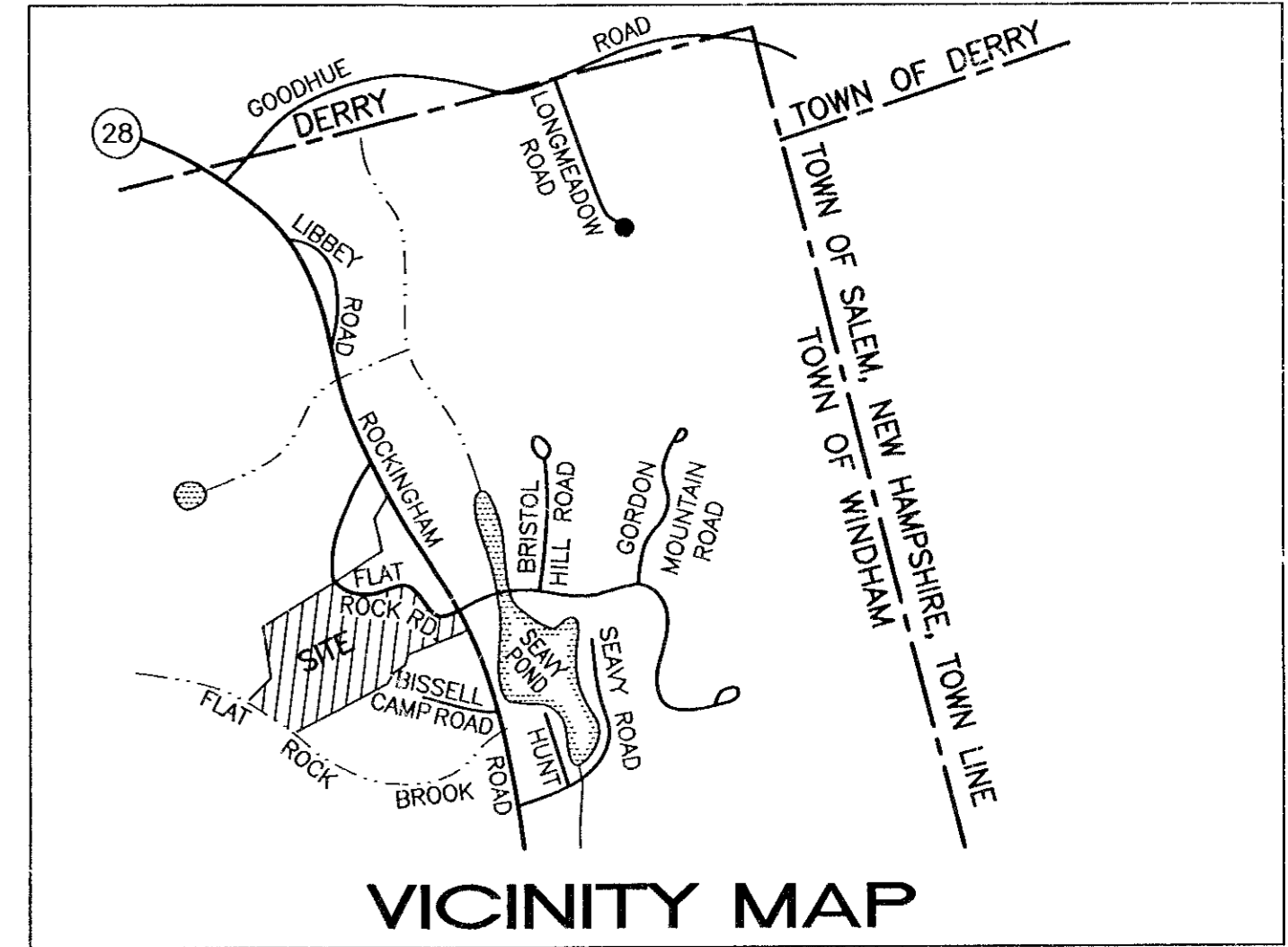
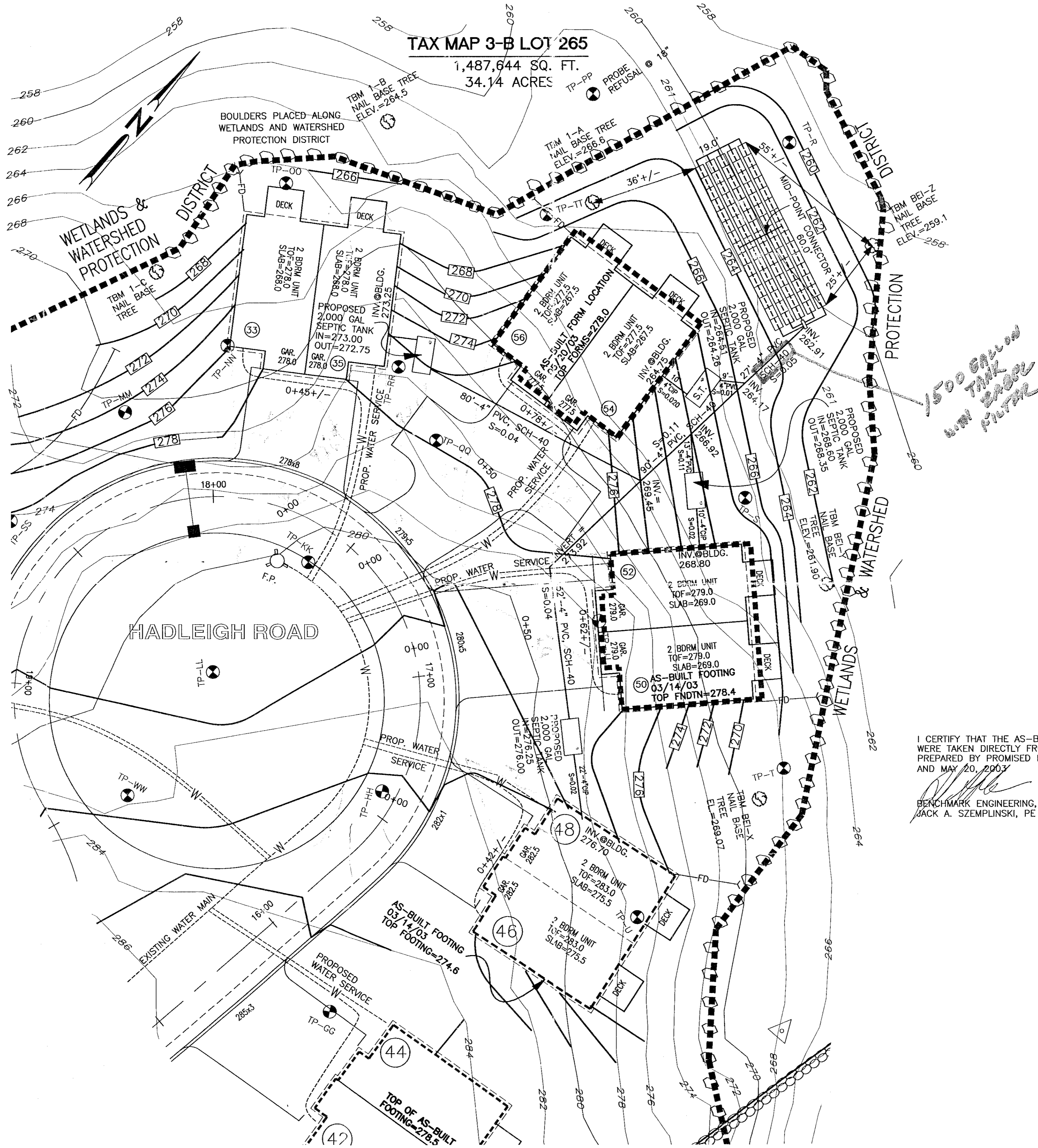
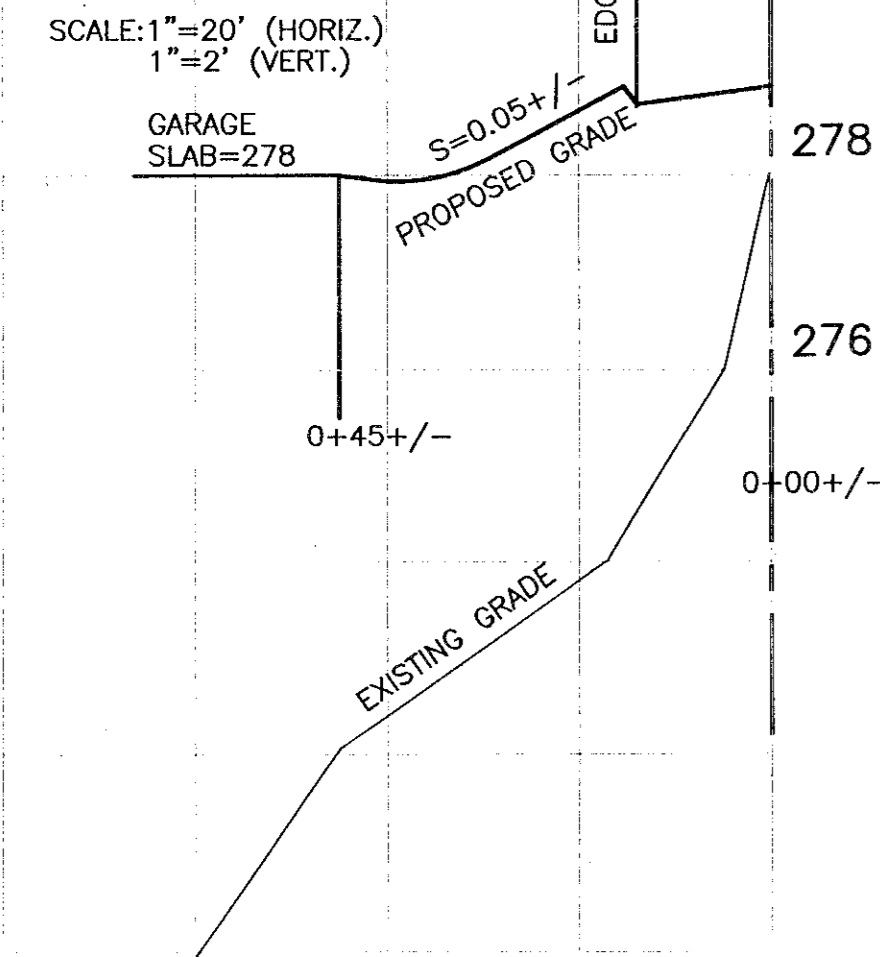
**TEST PIT "S"**  
(CONDUCTED ON NOVEMBER 15, 2001)

- 0-6" TOPSOIL (10YR 3/2) VERY DARK BROWN, TOPSOIL, FINE LOAMY SAND, GRANULAR, FRIABLE.
  - 6"-30" (10YR 4/6) DARK YELLOWISH BROWN FINE SANDY LOAM GRANULAR, FRIABLE.
  - 30"-56" (10YR 6/3) PALE BROWN FINE SAND, GRANULAR, FRIABLE.
- E.S.H.W.T.: 32"  
NO WATER OBSERVED  
REFUSAL: 56"  
RESTRICTIVE LAYERS: NONE ENCOUNTERED  
PERC. RATE: 8 MIN./INCH @ 34"

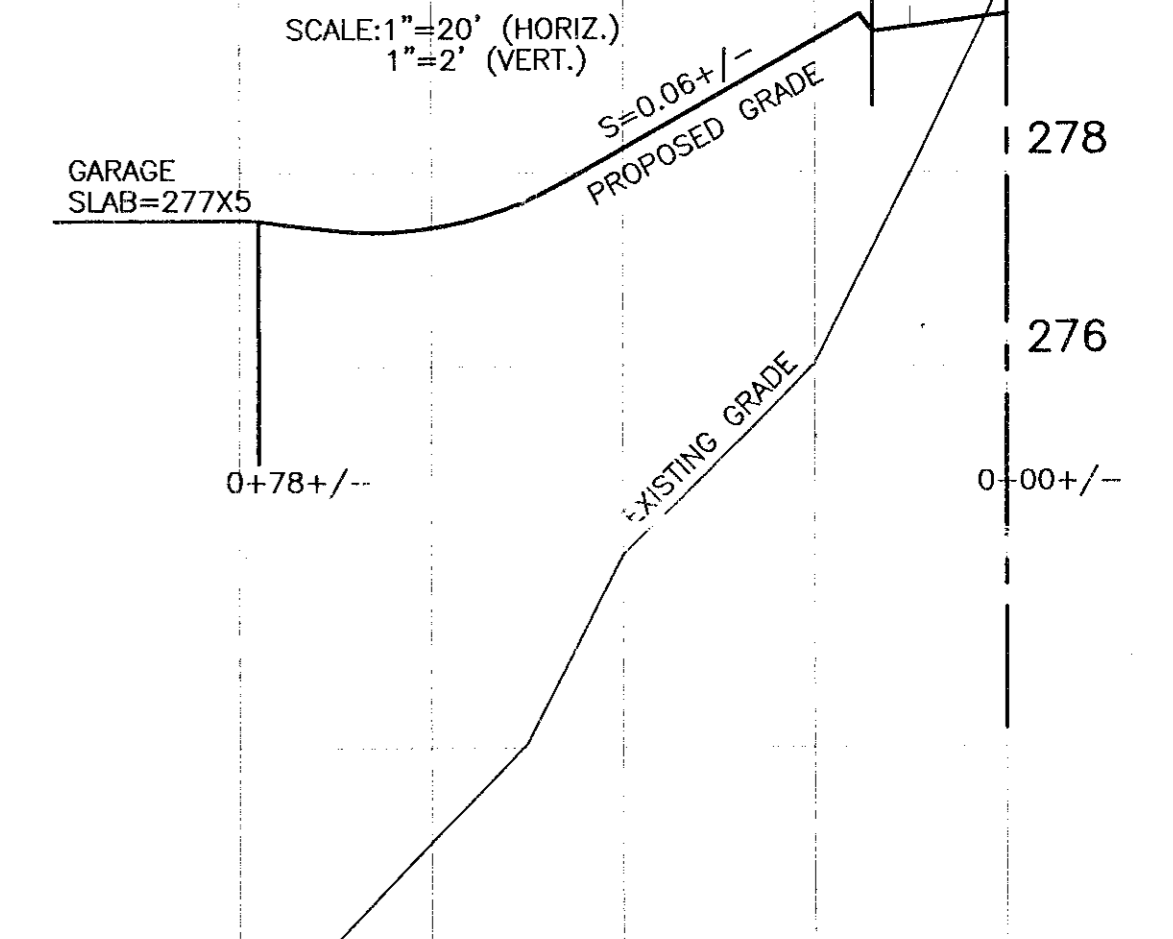
**TEST PIT "TT"**  
(CONDUCTED ON NOVEMBER 15, 2001)

- 0-3" TOPSOIL (10YR 3/3) DARK BROWN, TOPSOIL, FINE LOAMY SAND, GRANULAR, FRIABLE.
  - 3"-36" (10YR 4/6) DARK YELLOWISH BROWN FINE SANDY LOAM GRANULAR, FRIABLE.
  - 36"-64" (10YR 6/3) PALE BROWN FINE SAND, GRANULAR, FRIABLE.
- E.S.H.W.T.: 34"  
NO WATER OBSERVED  
REFUSAL: 64"  
RESTRICTIVE LAYERS: NONE ENCOUNTERED

**UNITS 33/35 DRIVEWAY PROFILE**



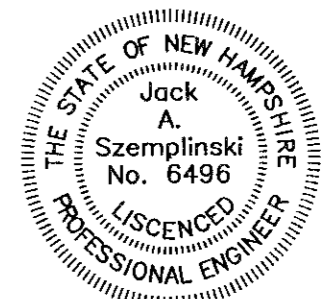
**UNITS 54/56 DRIVEWAY PROFILE**



I CERTIFY THAT THE AS-BUILT LOCATIONS SHOWN WERE TAKEN DIRECTLY FROM AN AS-BUILT PLAN PREPARED BY PROMISED LAND SURVEY ON MARCH 14, 2003 AND MAY 20, 2003

BENCHMARK ENGINEERING, INC.  
JACK A. SZEMPLINSKI, PE

5/29/03  
DATE



**SEPTIC SYSTEM PLAN**  
**TAX MAP 3-B LOT 265**  
**UNITS 33, 35, 46, 48, 50, 52, 54 & 56**  
**HADLEIGH ROAD**  
**WINDHAM, NEW HAMPSHIRE 03087**

OWNER OF RECORD/PREPARED FOR  
H&B HOMES CORP.  
8 DEERWOOD HOLLOW  
CHESTER, NEW HAMPSHIRE 03036  
R.C.R.D. BOOK 3575/PAGE 2759

SCALE: 1"=20' SHEET 1 OF 1 OCTOBER 31, 2002

REVISIONS	DATE

**BENCHMARK ENGINEERING, INC.**  
Consulting Engineers Land Planners  
10 Commons Drive, Suite 17  
Londonderry, New Hampshire 03053  
Phone: (603) 437-5000  
Fax: (603) 437-3078